

PRODUCT

CATALOGUE
CATALOGUE
CATALOGUE
CATALOGUE

Chihtrai
HAIR CARE

Chihtsai



OUR PHILOSOPHY

Chihtsai (芝彩) was founded in 1978 in Taiwan by Charlie and Artemis Tsai. Its name combines “Chih” (scented, anti-aging) and “Tsai” (colorful/glittering), and cleverly mirrors the founders' surname.

Shaan Hong and Chihtsai are rooted in a philosophy that blends scientific innovation with the beauty and balance of nature. Inspired by natural elements, their products are designed to restore and enhance hair health holistically—reflecting harmony, purity, and wellness.

LOVE your hair every day !

TABLE OF CONTENT

ICONOGRAPHY.....	1-2
YELLOW SEDUCTION.....	3-7
CHIHTSAI	8-14
OLIVE.....	15-18
SH-RD.....	19-24
COLOUR REFLECTION.....	25-28
ENERGIZING.....	29-30
N.P.P.E.....	31-32
C.A.A.....	33-34
SHAAN HONQ.....	35-36
COLOR FUN.....	37-40
PROFESSIONAL USE.....	41-44
ORDER BY USE.....	45-48

hair types



all hair types



wavy & curly



straight



straight & thin



thin

ICONOGRAPHY

Our icons are designed to help you quickly identify key product features, ingredients and usage recommendations. Our icon system will make it easier to find the products that best suit your needs.

Hair Concerns

Oily Hair



Split Ends

Damaged Hair



Hair Loss

Frizzy Hair



Tangled Hair

Sensitive/ irritated
Scalp



Dandruff

Colored/ Chemically
Treated Hair



Discover the effects and benefits of our products by exploring the icons displayed. Each icon represents key results, helping you find the ideal solution for your hair and scalp needs.

Effects & Benefits

Heat Protection



UV-Protection

Color Protection



Chlorine Protection

Nourishment



Hydration

Styling



Long-lasting Effect

Smoothness & Shine



Deep Cleansing

free from



A high number of our products are formulated without silicone, sulfates, parabens, PPD or ammonia. Please refer to individual product labels for specific ingredient information.

YELLOW SEDUCTION



The Yellow Seduction line is Chihtsai's signature line, introduced in 1987. It fulfills every need your hair might need. Yellow and white define the brand's identity - symbols of energy, clarity and care. Yellow Seduction embodies this spirit, offering vibrant, uplifting care that awakens the senses and restores hair's natural brilliance.



SHAMPOO NO.1

250ml | 1000ml

pH 6.07



Ideal for normal hair, before chemical or heat treatments (dyeing, perm, straightening).

Best combined with : No. 7

#N1 | #N1L



SHAMPOO NO.2

250ml | 1000ml

pH 6.17



Especially designed for deep clean of oily, fine and weak hair.

Best combined with : No. 8

#N2 | #N2L



SHAMPOO NO.3

250ml | 1000ml

pH 6.22



Stops scalp itching, prevents hair loss and eliminates dandruff.

Best combined with : No. 8 , No.20

#N3 | #N3L

SHAMPOO NO.4

500ml

pH 5.6



Enriched with chamomile, which provides soothing effect. Ideal for oily scalp and dyed hair.

#N4

SHAMPOO NO.5

250ml | 1000ml

pH 6.29



For dry and damaged hair. Recommended after chemical treatments.

Best combined with : No. 7

#N5 | #N5L

SHAMPOO NO.6

250ml | 1000ml

pH 6.15



No.6 hydrates deeply and tames rebellious, unruly hair. Ideal for long, coarse and curly hair.

Best combined with : No. 7

#N6 | #N6L

PH BALANCING RINSE NO.7

250ml | 1000ml

pH 4.38



No.7 balances natural pH after alkalic, chemical treatments. Provides smoothness and shine due to its high hydrolyzed collagen concentration.

Suitable for colored hair.

#N7 | #N7L

FINISHING RINSE NO.8

250ml | 1000ml

pH 4.51



Adds volume and detangles hair, while the mint extract provides a refreshing sensation. Leaves hair soft and reduces frizziness.

Suitable for all hair types.

#N8 | #N8L



HAIR PURIFIER NO.20

220ml

pH 6.5



Nettle, arnica, willow and mint accelerate metabolism and activate hair follicles. Recommended to prevent hair loss, dry scalp and flaking.

#N20



NATURAL HAIR PURIFIER

220ml



Soothes irritation, reduces dandruff and balances sebum secretion by natural ingredients like tea tree oil and chamomile. It's herbal and ideal for maintaining a healthy scalp.

#F105



INSTANT TREATMENT NO.12

50ml | 150ml



Leave-in treatment repairs dry, porous, coarse and dyed hair with split ends. Rich in silk protein and enriched with Vitamin E and rosemary, it gives hair a silky texture and shine.

#N12-S | #N12



EXCELL CUTICLE COAT NO.22

75ml

pH 6.47



Protects against damage, softens unruly and coarse hair and treats split ends and porous hair. Recommended for long, tangled and porous hair.

#N22

CO Q10 SUPPLY

6 x 10ml



Rich in hyaluronic acid, antioxidants and botanical extracts. Restores hair's healthy appearance, elasticity and volume. Suitable for damaged and porous hair.

#F113-I



CO Q10 RENEWAL

6 x 10ml



Leave-in overnight hair mask with a high concentration of essential oils based on tea tree offering rejuvenation. High in keratin which repairs and strengthens the hair cortex.

#F114-I



HAIR EMULSION NO.35



750ml + 6 x 10ml



Essential oils (grapefruit, rosemary and sun-flower) and hair mask rich in collagen. Stimulates and soothes the scalp and repairs damaged hair. Ideal after chemical treatments.

#N35

KERATIN CREAM NO.36

500ml

pH 4.8

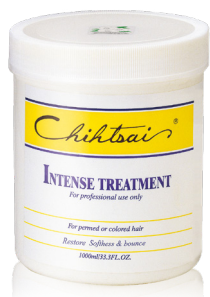


High in Cystine, antioxidants and nourishing ingredients help to rebuild, repair and restore elasticity and shine. Recommended for dry, damaged and chemically treated hair.

#N36

INTENSE TREATMENT

1000ml



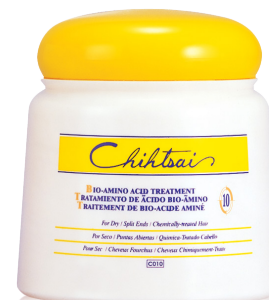
Enriched with squalane and wheat oil. It restores shine and elasticity of dry hair. It is suitable for hair damaged by chemical treatments. Especially recommended after perm.

#E10 | #E11

BIO-AMINO ACID TREATMENT

300ml

pH 4.15



Recommended for dry, damaged hair, especially after chemical treatments. Improves hair texture and repairs split ends. Its effectiveness is due to its high concentration of amino acids, avocado oil and vitamin B5.

#N10

INTENSIVE ELASTIN NO.II

6 x 10ml



Suitable for weak, dehydrated hair as it hydrates and strengthens the hair. Restores elasticity, ideal after chemical treatments. For even better results, it is recommended to combine with Chihtsai Treatments No.10 and No.36.

#N11



SCULPTING LOTION NO.13

250ml | 1000ml



Ideal for hairstyles on curly, unruly hair and for a wet look or blow-dry look. Adds shine and leaves hair glossy without residue.

#N13 | #N13L



SCULPTING LOTION NO.14

250ml | 1000ml



Moisturizing hair cream for styling and defining curls. Provides a light hold to the hairstyle and adds shine. Suitable for curls and glossy looks.

#N14



HAIRSPRAY NO.16

220ml



Hold ● ● ● ● ●
Shine ● ● ● ○ ○

#N16



HAIR DESIGN SPRAY NO.25

220ml



Hold ● ● ● ● ●
Shine ● ● ● ○ ○

#N25



MOLDING GEL NO.24

250ml | 1000ml



Hold ● ● ● ● ●
Shine ● ● ● ○ ○

#N24-M | #N24

Chihtsai

HAIR CARE



CURL ENHANCER SHAMPOO

250ml



This shampoo locks in moisture, prevents split ends and repairs hair from within. Enriched with botanical extracts, Argan oil and Niacinamide to restore and strengthen damaged hair.

#FN032-M



CURL ENHANCER

300ml



Leave-in formula that defines curls, tames frizz and adds bounce.

Hold ● ● ● ○ ○
Shine ● ● ● ○ ○

#FN204-M



CURL ENHANCER SEMI-TREATMENT

250ml



Chihtsai Curl Enhancer Semi-Treatment is a lightweight. Enriched with Argan oil and botanical extracts, it hydrates and softens without weighing hair down.

#FNI42-M



COOLING SCALP REVITALIZER

120ml



Chihtsai Cooling Scalp Revitalizer soothes and refreshes the scalp, promotes healthy hair growth and reduces irritation with a cooling, invigorating formula.

#FNI46

>MIRACLE< VOLUMINIZING SHAMPOO

1000ml

A sulfate-free, nourishing formula that gently cleanses while adding volume and shine. Infused with olive oil and pantenol, it strengthens hair and boosts body - ideal for fine or straight hair.



#FN29



>MIRACLE< VOLUMINIZING CONDITIONER

1000ml

Chihtsai Miracle Volumizing Semi-Treatment is a conditioner that adds volume and smoothness without weighing hair down, perfect for fine or limp hair.

#FN138



ESSENTIAL SHAMPOO

500ml

The essential oils of tea tree restore balance to the scalp by eliminating dandruff and itching. Recommended for all hair types, especially for sensitive scalp with dandruff or flaking.

#F97



GRAPEFRUIT SHAMPOO

500ml

It restores hair with a concentrated blend of natural oils and nutrients. It balances sebum secretion making it ideal for oily hair.

#FN009



PLUMBING MOUSSE

380ml

'Plumbing Mousse' enhances manageability, adds shine and provides moderate hold while protecting hair from heat, UV and environmental damage.

Hold ● ● ● ○ ○
Shine ● ● ● ● ○

#FN252



CREATE IT SPRAY

380ml

'Create it Spray' supports roots, shapes hair, adds texture and protects from heat with long-lasting hold.

Hold ● ● ○ ○ ○
Shine ● ● ● ○ ○

#FN253



FUN STYLER

300ml

Chihtsai Fun Styler defines curls and waves with light-weight hold, fights frizz, adds shine and boosts volume - no buildup.

Hold ● ● ○ ○ ○
Shine ● ● ● ● ○

#FN202-N



TEXTURIZING CREAM

300ml

Texturizing Cream adds texture, volume and flexible hold with a soft, natural finish. Light-weight and non-greasy, it's ideal for defining styles.

Hold ● ● ● ○ ○
Shine ● ● ● ● ●

#FN144



MIRACLE LEAVE-IN HAIR CREAM

100ml



Miracle Perfume Leave-In Hair Cream nourishes and protects hair while leaving a lasting, pleasant fragrance. It smooths, hydrates, and enhances manageability for soft, fragrant hair.

#FNI39

BLOSSOM & HONEY HAIR PERFUME

50ml



Blossom & Honey Hair Perfume refreshes and fragrances hair with a sweet, floral scent while adding a light, protective finish for silky, fresh-smelling hair.

#FNI45-2



HYALURONIC CERAMIDE HAIR MOISTURIZER

300ml



Hyaluronic Ceramide Hair Moisturizer hydrates, smooths frizz, and strengthens hair, leaving it soft and healthy-looking.

#FN4I



PERFUME HAIR DETANGLER

50ml

Lightweight cream that detangles, tames frizz and static, adds shine, and softens hair. Ideal for daily use on all hair types.

#FNI23-I



REFRESHING HYDRATION MASK

500ml

Cooling scalp mask that hydrates, soothes irritation, and refreshes with mint and tea tree oils. Ideal for oily or sensitive scalps.

#FNI47

AVOCADO OIL CREAM (LEAVE-IN)

100ml



Infused with avocado oil, vitamins and natural lipids that deeply nourishes and protect the hair. It smooths frizz, seals split ends and restores shine. Ideal for dry, damaged, or chemically treated hair.

#FN101

MOISTURIZING POMADE

280ml



Chihtsai Moisturizing Pomade provides deep hydration, smooths hair and offers flexible hold for soft, manageable styles without stiffness.

#F99

AVOCADO MAGIC OIL

60ml



Rich in vitamins A, D and E, as well as in proteins, iron, copper, magnesium, and folic acid. It deeply nourishes, moisturizes and softens dry or damaged hair, restoring elasticity and shine.

#FN105

GP ESSENCE LOTION

12x 5ml



GP Essence Lotion contains herbal active ingredients which are strongly stimulating the growth of cell of hair follicles and accelerating hair metabolism as well as hair volume.

#FN116

>AVOCADO PEPPERMINT< SHAMPOO



250ml



Avocado oil strengthens the hair while shielding it from damage. Antioxidants help to protect against environmental and chemical stressors and combats frizziness.

#FN26-M

>FRESH GREEN TEA< SHAMPOO

250ml | 1000ml



The antioxidant-rich shampoo cleanses without stripping color. Infused with green tea and mint to refresh the scalp and protect hair. Sulfate-free and ideal for oily and fine hair.

#FN14-M | #FN14

>COLOR PROTECT< SHAMPOO

250ml | 1000ml



This formula scented with sweet apricot is specially formulated for colour-treated hair. It gently cleanses while locking in pigment and boosting shine, helping to prevent color fade.

#FN22-M | #FN22

>AVOCADO PEPPERMINT< SEMI-TREATMENT

250ml



It restores hair with a concentrated blend of natural oils and nutrients. It smooths the cuticle, controls frizz, and adds shine, making it ideal for dry, damaged or color-treated hair.

#FN134-M

>FRESH GREEN TEA< CONDITIONER

250ml | 1000ml



Conditioning treatment with green tea extract. Restores moisture, balance and shine. Protects hair and suits oily and fine types.

#FN119-M | #FN119

>COLOR PROTECT< SEMI-TREATMENT

250ml | 1000ml



Deeply moisturizes and revitalizes dry, color-treated hair. Enhanced with apricot scent it smooths frizz, restores lifeless ends and preserves color vibrancy.

#FN127-M | #FN127



>DAMASK ROSE< SHAMPOO

250ml



Infused with Damask rose, it gently cleanses while giving vitality to dull or chemically treated hair. It revitalizes weakened strands, smooths frizz and enhances shine.

#FN117-M



>LYCOPENE< SHAMPOO

300ml | 1000ml



This shampoo protects hair from free-radical and UV damage while gently cleansing. It features hydrolyzed wheat protein and vitamin B5 to strengthen and nourish hair strands.

#FN110-M | #FN110



>DAMASK ROSE< SEMI-TREATMENT

250ml



Damask rose extract and lecithine deeply moisturise and soften the hair. It helps repair damage, smooths frizz and enhances shine, making it ideal for dry, damaged hair.

#FN122-M



>LYCOPENE< HAIR TREATMENT

1000ml

Lycopene, vitamin B5 and wheat protein improves porosity, strengthens hair, restores moisture, smooths frizz and boosts shine. Ideal for color-treated or processed hair.

#FN91



PERFUME ROSE OIL

50ml

Our formula restores hair's resilience and elasticity. Enriched with vitamin C, it enhances moisture and nourishes dry, damaged hair. Ideal for rough, thin or treated hair.

#FN120



>POMEGRANATE< REPAIRING TREATMENT

1000ml

Rich in antioxidants, this pomegranate-infused treatment restores dry hair, adds shine, hydrates and strengthens without weighing it down. Leaves hair soft and healthy.

#FN106

Volume Moisture OLIVE

Chihtsai Olive Line embraces the power of nature with a commitment to pure, effective hair care. Enriched with nourishing olive oil, keratin and botanical extracts, this line gently cleanses, deeply hydrates and repairs hair without harsh chemicals. Designed to protect and revitalize all hair types, it leaves hair soft, vibrant and healthy—reflecting the true beauty of natural care.



OLIVE SHAMPOO

500ml | 1000ml

pH 6.01



Shampoo based on olive oil for all hair types. Deeply cleanses, nourishes and hydrates the hair providing volume and elasticity. Gives vitality and bounce to the most lifeless hair.

#FO 01



OLIVE CONDITIONER

280ml | 500ml

pH 5.0



Maintains elasticity and hair strength, making detangling easier. Rich in collagen, panthenol and hydrolyzed keratin.

Combine with: Olive Shampoo

#FO19-M | #FO19



OLIVE SHAMPOO



280ml | 1000ml



Sulfate- and paraben-free formula enhances the benefits of olive and coconut, regulates oiliness and is ideal for curly, dry hair.

#FO20-M | #FO20-L



HAIR TREATMENT

500ml + 6 x 7ml pH 5.0



Hair treatment with olive oil and vitamin B5 for fine, dry, brittle hair. Restores vitality, adds volume and is quickly absorbed. Includes strengthening ampoules.

#FO02



INSTANT TREATMENT

80ml | 150ml pH 5.1

The combination of olive oil and silk proteins strengthens the hair, combats split ends and damage. Hair immediately gains a silky texture while also being protected from heat.

#FO04-S | #FO04



COLORFUL CONDITIONER

250ml pH 5.95

The leave-in Conditioner protects hair color, reduces frizziness, nourishes the hair and adds shine and volume. Enriched with Vitamin E and keratin, it's ideal for summer months.

#FO10



CUTICLE SEAL

280ml



Achieves high protection of all hair layers, nourishes hair from within due to the polysaccharide chitosan (chitin). Use as protection during treatments or as leave-in treatment during styling process.

#FO23-N



TONIC LOTION

150ml pH 5.5



The herbal blend is balancing the sebaceous glands secretion and controls the overgrowth of the bacteria of the scalp. Combats oiliness and dandruff while relieving itching and irritation. Suitable for oily, irritated and sensitive scalp.

#FO05



THERMAL PROTECTIVE SPRAY

115ml



Contains olive oil and panthenol, providing hydration and elasticity, aiding in detangling and reducing static electricity. Protects hair during heat styling and has UV protection. Ideal for summer use.

#FO22



SCULPTING LOTION

250ml

pH 5.1



Protects against UV rays, enhances shine and eliminates static electricity. Ideal for light hold in wavy and curly hair and for wet look.

Hold ● ● ● ● ●
Shine ● ● ● ● ●

#FO08



STYLING STRAIGHTENER DEW

250ml

pH 5.6



Enriched with chamomile, which provides soothing effect. Ideal for oily scalp and dyed hair.

Hold ● ● ● ● ●
Shine ● ● ● ● ●

#FO07



MOLDING CLAY

80ml

pH 5.0



Gives strong hold, volume and matte texture.

Hold ● ● ● ● ●
Shine ● ● ● ● ●

#FO06



>SPIKER< STYLING GLUE

85ml

pH 6.15



Combines conditioning and styling altogether.

Hold ● ● ● ● ●
Shine ● ● ● ● ●

#FO12



FINISHING SPRAY

300ml

pH 5.6



Hold ● ● ● ● ○
Shine ● ● ● ○ ○

#FO2I



RELAXING MASSAGE ESSENCE

30ml

pH 6.5



Olive Relaxing Massage Essence soothes the scalp, reduces flaking, and strengthens hair. Boosts scalp metabolism and helps prevent hair loss with Vitamin E and essential oils.

#FO09



BODY MILK

500ml

pH 5.95



With hyaluronic acid, aloe, chamomile, citrus and olive oil. Hydrates, maintains elasticity and leaves skin soft and lightly scented. Suitable for all skin types.

#FO27

PROFESSIONAL USE

PERM

2x 12ml + 1x 20ml

pH 9.3



Professional-use perm for firmly, bouncy and long-lasting curls. Infused with olive oil to maintain vitality of the hair.



#FO03

BARRIER CREAM

280ml



Contains chamomile extract to soothe the skin, while panthenol, lanolin, and squalene create a protective shield against chemicals. Recommended for use before any chemical hair treatment.



#FOI3

SH-RD

HAIR CARE

SH-RD stands for Shaan Hong - Rosemary and D-panthenol, the brand's signature ingredients. SH-RD focuses on the intersection of science, nature and luxury. The formulas are developed with both natural ingredients and cutting-edge technology to nourish and repair hair from within, while delivering salon-quality results.





TRUFFLE MOISTURIZING SHAMPOO

200ml



Truffle Moisturizing Shampoo cleanses, enriches and improves the quality of the hair as a result of its excellent composition and beneficial action of truffle extract. It restores shine and elasticity of the hair, and brings vitality to dull and lifeless hair.

#SD204



REISHI VOLUMINIZING SHAMPOO

200ml



This unique shampoo formula lifts all hair types, from fine to coarse, and helps to make hair look fuller while feeling healthier and thicker. Reishi extract strengthens and repairs damaged hair while Argan Oil and Vitamin B3 instantly volumize and add an enviable shine.

#SD205



SAGE PURIFYING SHAMPOO

200ml



Shampoo with sage and a combination of 8 other herbal extracts enhanced by high quality silk protein. Particularly effective in cases of oily hair with increased sebum secretion and dandruff. Silk protein gives fantastic shine to the hair thus maintaining the quality of the hair.

#SD206



RED GINSENG HAIR-ACTIVATING SHAMPOO

200ml



Ginseng shampoo mobilizes hair follicles, reduces hair loss while chamomile essential oil acts soothingly. Rooibos, Green and Black tea offer antioxidant properties, leaving hair full of vitality. It improves the symptoms of dry skin, itching and sensitivity of the scalp caused by dandruff.

#SD207



TEA TREE SCALP SHAMPOO

280ml | 1000ml



Tea Tree Scalp Shampoo is a remedy for dandruff, dryness and itchiness, leaving your scalp clean and balanced. Enriched with nourishing tea tree essential oil, it soothes scalp sensitivity and enhances hair smoothness, shine and manageability.

#SD216-M | #SD216



THYME INTENSIVE SHAMPOO

280ml | 1000ml



Thyme Intensive Shampoo is a targeted solution for dandruff and oily scalp, combining all effective ingredients to combat flakes, itchiness and excess oil. Moistures the hair, making it perfect for chemical-treated hair.

#SD217-M | #SD217



NUTRA-THERAPY SHAMPOO

100ml | 250ml | 500ml | 1000ml



Shampoo features a unique blend of vitamins, rosemary and hydrolyzed wheat protein, which infuses nutrients to damaged hair shafts and restores compromised hair back to health. Gently cleanses the scalp and hair while restoring their overall resilience.

#SUI79-M | #SUI79 | #SUI79-L
#SUI79-XL



TRUFFLE MOISTURIZING SEMI-TREATMENT

200ml



This hydrating and nourishing semi-treatment contains truffle extract, known to maintain hydration and keep the scalp's health. Keratin smooths and seals hair's cuticles, creating a protective shield. Ideal for dry and damaged hair.

#SD208



SAGE PURIFYING SEMI-TREATMENT

200ml



Formulated with a wide range of essential fatty acids derived from Avocado oil and hydrolyzed collagen. The Sage Purifying Semi-Treatment instantly detangles hair and smoothes its cuticles, with just the right amount of moisture.

#SD209



NUTRA-THERAPY CONDITIONER

100ml | 250ml | 500ml | 1000ml



Formulated with Nutra-Therapy Complex, a blend of essential vitamins, Rosemary Extract and hydrolyzed keratin to provide hair and scalp with vital nutrients and to ultimately restore compromised hair back to life.

Best combined with:
Nutra-Therapy shampoo.

#SUI80 | #SUI80 | #SUI80-L
#SUI80-XL



PROTEIN HAIR MASK

200ml



Argan, Macadamia, & Avocado oil, as well as Shea Butter provide deep conditioning that leaves hair soft and more manageable. Plus, hydrolyzed keratin forms a protective film on hair's outer layer to prevent future damage from environmental aggressors, heat styling and chemical treatments.

#SUI86



NUTRA-THERAPY SHINE SERUM

36ml



Shine Serum, rich in avocado oil, protects from UV-rays, heat and color loss. It gives intense shine and softness to the hair. Restores moisture, repairs damaged ends and protects all layers of the hair. Ideal for summer months.

#SUI81



PROTEIN CREAM

80ml | 150ml



Leave-in cream for regeneration and rejuvenation. Contains abundant silk proteins to regulate the hair's moisture and pH. Also creates a protective sheath around the hair. This way the hair is protected from sun, pool chlorine and chemical treatments. Leaves hair soft and shiny. Recommended for porous hair and against split ends.

#SUI29-M | #SUI29



PROTEIN CREAM GOLD DELUXE EDITION

80ml



This innovative cream contains high quality gold leaf, rosemary extracts and additional silk protein. Characterized by rich texture and its amazing ability to reconstruct, rejuvenate and moisturize. It prevents split ends, dryness, frizz and protects against UV rays, heat and chlorine which makes it a perfect ally in protecting hair during the summer months.

#SD212



INTENSIVE ROOT REPAIR ESSENCE

50ml



This Essence offers thin and weak hair their lost vitality. It stimulates hair follicles, increases circulation to the scalp, maintains pH balance and acts against hair loss. It has anti-aging properties as the rosemary extracts reduce oxidative stress and prevent premature aging.

#SD210



INTENSIVE FULL & THICK HAIR ESSENCE

50ml



Excellent formula enriched with fine ingredients that stimulate the cellular growth of the hair follicle and has inhibitory effects on DHT - the hormonal cause of hair loss in men. Thickens sparse hair, giving it volume and fullness. Ideal for combating hair loss.

#SD211



REVIVE SCALP ESSENCE

50ml



Rejuvenates the scalp and the active herbal power favors a better flow of oxygen to the cells with adequate nourishment. Organic seaweed increases the quality and density of hair fibers and visibly improves volume and the speed of hair proliferation.

#SUI82-C

COLOR

REFLECTION



The Color Reflection series is a comprehensive hair care collection expertly crafted to enhance, protect and prolong the vibrancy of all hair types, especially color-treated hair. Each product is thoughtfully formulated with advanced ingredients that target specific hair concerns such as dryness, damage, fading and scalp sensitivity. This line not only preserves color intensity and shine but also nourishes and strengthens hair fibers to maintain healthy, resilient locks. Free from harsh chemicals the collection supports gentle yet effective care.



>SENSE< SHAMPOO

535ml



Reduces dandruff, itching and restores balance to oily scalps. Enriched with moisturising ingredients in order to enhance hydration, detangle strands and control frizz.

#FN003



>WISDOM< SHAMPOO

535ml



Offers antioxidant, anti-aging and moisturizing care for dry, treated hair. Enhances elasticity, volume and shine. Ideal for brown or red-colored hair.

#FN004



>PEACE< SHAMPOO

535ml



Rosemary lime shampoo for treated hair. Controls frizz, detangles and maintains moisture. Ideal for permed, straightened or colored hair.

#FN005



>JOY< SHAMPOO

250ml | 535ml

A refreshing shampoo with a cooling effect that revitalises the scalp and eliminates dandruff. Cleanses deeply while keratin maintains the hair's elasticity and vitality.

#FN006-M | #FN006



>HARMONY< SHAMPOO

535ml



Purifying shampoo that soothes and hydrates irritated scalp with aloe vera and ginseng. Ideal for sensitive scalp.

#FN011



>BALANCE< SHAMPOO

535ml



Quinoa formula rich in amino acids that moisturises, protects and retains color up to 9 weeks. Prevents breakage and is ideal for curly, permed or colored hair.

#FN021



>INSIGHT< SHAMPOO

750ml



Powerful caffeine and rosemary oil work together to stimulate growth, block DHT and help prevent hair loss and graying by deeply nourishing hair follicles.

#FN028-L



CAFFEINE SERUM

120ml



Caffeine Hair Growth Serum reactivates hair follicles to grow healthy hair. Adds fullness to thinning hair by enhancing scalp circulation and metabolism. Safe and effective for both men and women.

#FN136



>ENERGY< SHAMPOO

535ml



Pomegranate shampoo hydrates, adds shine, and protects color. Ideal for all hair types.

#FN018



>TRUST< SHAMPOO

750ml



The ginger and ginseng have an anti-inflammatory effect in order to soothe the sensitive scalp and revive hair roots. Suitable for all hair types, especially for dry, flaky scalp.

#FN036-L



>CLARITY< SHAMPOO

750ml



Based on sage extracts and a fine herbal mixture it enhances scalp health and balances sebaceous production. Ideal for fine, oily, limp hair.

#FN033-L



>PURITY< SHAMPOO



750ml



Purity Shampoo with lotus and moringa balances oil, refreshes and deeply cleanses, promoting healthy hair follicles. Suitable for all hair types.

#FN030-L



>FAITH< SEMI-TREATMENT

250ml | 535ml



A rich, strengthening treatment that deeply conditions and reinforces the hair fiber. Perfect for color-treated hair needing softness, repair and resilience.

#FNI04-S | #FNI04



>HAPPINESS< SHAMPOO



750ml



Improves texture, eliminates frizziness, deeply hydrates and leaves hair beautifully radiant and smooth. With lotus and moringa extracts. Suitable for all hair types.

#FN031-L



>COURAGE< SEMI-TREATMENT

250ml | 535ml



This deep-repair treatment revives damaged or color-stressed hair. It restores strength, elasticity and intense shine. Best combined with Peace Shampoo.

#FNI07-S | #FNI07



>LOTUS & INCA OIL< MASK

500ml



With lotus extract and Inca Oil, it deeply hydrates, strengthens, and protects from heat and chemicals while boosting shine and preserving color.

#FNI43



>TRANSFORM< SCALP MASK

535ml



An intensive scalp mask that detoxifies, exfoliates and hydrates the scalp. It effectively removes buildup, soothes irritation and leaves hair feeling clean, refreshed and weightless.

#FNI12



ENERGIZING

Energizing is specially formulated to revitalize limp, dry, or frizzy hair by infusing it with moisture, strength and shine. Rooted in an organic, LOHAS-certified philosophy, these products combine nature-derived actives with modern hair science to protect and energize every strand.





ENERGIZING SHAMPOO

250ml | 1000ml



Sulfate & Paraben free Energizing Shampoo cleanses the scalp and reduces excessive sebum secretion. Enriched with organic linden, avocado extracts and coconut oil. Ideal for oily roots and dry, split ends.

#FE01-M | #FE01-L



ENERGIZING SHAMPOO

460ml



Refreshing shampoo with linden extract that cleanses, nourishes, and protects hair. Helps preserve color from sun and chemicals while adding shine, volume, and vitality.

#FE01



ENERGIZING HAIR CREAM

460ml



Energizing hair cream protects from UV rays and damage of chemical treatments. Linden are rich in amino-acids and peptides which constitute essential nutritive elements in order to moisturize, protect and smooth hair.

#FE02



PROTEIN TREATMENT

630ml



Protein Treatment penetrates the cuticle and cortex, restoring vitality and strength to hair. Ideal as a weekly treatment for chemically-treated hair. For best results, follow with Energizing Hair Cream.

#FE03-L

N.P.P.E.

— HAIR CARE —



N.P.P.E. is inspired by the power of nature with formulas focused on herbal extracts and essential oils. Designed to strengthen and hydrate, it helps to repair damage while enhancing shine and vitality.

QUINOA SHAMPOO

1000ml



Quinoa shampoo is rich in amino acids which helps to restore hair structure. It enhances volume and protects dyed hair from losing its shine.

#SN25

QUINOA CONDITIONER

1000ml



Quinoa Conditioner hydrates and strengthens hair with quinoa protein, repairing damage and leaving hair soft, smooth and shiny.

#SN125



RED GINSENG SHAMPOO

750ml



Red Ginseng boosts volume by activating follicles. Chamomile calms the scalp and reduces oil and dandruff while Rooibos and Camellia tea add softness and shine.

#SN10



REFRESHING SHAMPOO

500ml



Formulated with artemisia, pomelo, organic avocado oil and sweet orange essential oils. Suitable for cases requiring special care due to a sensitive scalp.

#SN26



MINT & ALOE SHAMPOO

1000ml



Mint & Aloe Shampoo soothes and hydrates the scalp, eliminates dandruff and stops itching. Suitable for oily hair and effective against dandruff.

#SN29



>SLEEK & SHINE< LEAVE-IN CREAM

50ml



Freesia and blackcurrant leave-in treatment nourishes and protects color-treated, heat-styled hair. Prevents dryness, dullness and split ends. Ideal for summer.

#SN126-2



Collagen Amino Acids

The C.A.A. line by Shaan Hong harnesses the power of collagen and amino acids to rebuild and strengthen damaged hair from within. This advanced formula deeply nourishes and repairs hair fibers, restoring moisture and elasticity while protecting against breakage and environmental stress. With every use, C.A.A. revitalizes hair, leaving it stronger, healthier and more resilient.





SHINING CONDITIONER

500ml



The CAA Shining Conditioner is great for nourishing hair and reducing hair frizziness. It contains collagen amino acids to restore the vitality of thin/limp hair. Vitamin E has anti-aging and anti-oxidation effects and D-Panthenol provides deep nourishment.

#FS2



SHINING HAIR TREATMENT

600ml



Shining Hair Treatment thoroughly replenishes hair adding moisture, enhances volume and prevents protein loss. Formulated with Vitamin E, sunflower oil and D-panthenol for superb softening effects. Suitable for fine/limp hair.

#FS4



SHINING HAIR MIST

200ml



Formulated to provide brilliance and vitality to hair. It is suitable for all hair types, adds volume and fullness to hair, while protecting hair color from fading and oxidation.

Shine ● ● ● ● ●

#FS5



SHINING LIQUID WAX

300ml



Liquid wax eases styling of wet or dry hair. Gives lasting hold, makes porous hair softer and smoothes the natural curl. Protects from sun exposure and atmospheric pollution.

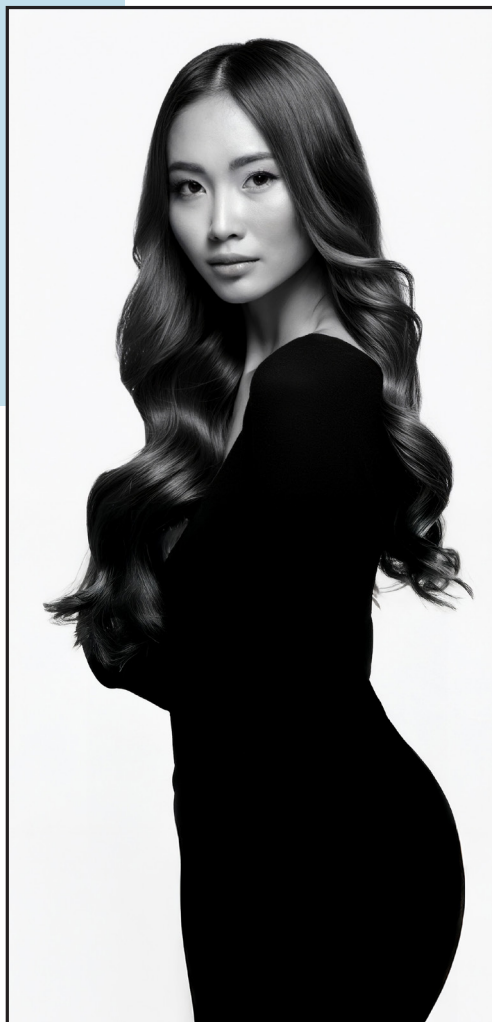
Hold ● ● ● ● ●
Shine ● ● ● ● ●

#FS3

SHAAN HONQ

Mission

Since 1985, Shaanhonq International Corporation was founded with the ambitious idea of providing innovative and exceptional products for hairdressers, assisting them in creating beautiful works of art. Since our inception, our mission to achieve that vision has remained resolute. We have dedicated all our research and development in to creating the best professional hair care product in the market and aim to make them available to salons around the world.



FIRM HOLD STYLING GEL

120ml



Hold	●	●	●	●	○
Shine	●	●	●	●	○

#SHI32



SH LEVANDER HAIR SPRAY

230ml



Hold	●	●	●	●	●
Shine	●	○	○	○	○

#SH3I-N

DRY BLAST MUD

15g



Hold	●	●	○	○	○
Shine	●	●	●	●	●

#SHI6I-S



Hold	●	●	●	○	○
Shine	●	○	○	○	○

#SHI62-S



Hold	●	●	●	●	●
Shine	●	●	●	●	●

#SHI63-S



SPA SOOTHING SPRAY

250ml



Aloe vera and Ginseng soothe irritation, control dandruff and strengthens hair roots. Ideal for oily or sensitive scalps.

#SH36



GINGER SCALP EXFOLIATING GEL

250ml



Exfoliating cream with ginger that removes dead cells, soothes the scalp, and boosts circulation. Ideal for dry or sensitive scalps

#SH133



SPA EXFOLIATING CREAM

250ml



Soothes the scalp with aloe vera and Ginseng. Exfoliating scalp scrub cleans deeply, reduces irritation and promotes healthy hair growth. Ideal for dry or sensitive scalps.

#SH37



DEEP TREATMENT MASK

500ml



Deep treatment mask offers rehydration to damaged, dry hair. Rich in argan oil, silk and wheat protein that help hair to regain their lost softness and elasticity.

#SH108



ALGAE EXTRACT MASK

250ml



Nourishing hair mask with red and brown algae, peppermint, and tea tree oils. Hydrates, soothes, and refreshes-perfect for post-color or oily scalps.

#SH47



MIRACLE LUMINOUS ELIXIR

4x 25ml | 6x 25ml



Repairs damage, split ends and dryness while adding shine and smoothness. Apply to towel-dried hair, leave 5 minutes, then rinse. Ideal for damaged or chemically treated hair.

#SH82-P | SH82



Rooted in professional expertise and clean formulation, the vibrant shades can be used individually or mixed together to create personalized tones. Free from ammonia and peroxide, it gently colors while conditioning the hair. Suitable for bleached or pre-lightened hair for more intense results.

While formulated with salon-quality standards, our products are suitable and easy to use for everyone - from professional stylists to individuals exploring hair color at home.



COLOR BALANCE SHAMPOO

250ml



Advanced triple-action protection, locks in color and strengthens hair. A unique amino acid complex repairs and seals the hair for extended color retention.

#FN015-1
(VIOLET RED)

#FN015-2
(VIOLET BLUE)

#FN015-3
(GREEN)

HAIR COVER FOUNDATION

10g



Hair cover foundation is a lightweight, easy-to-apply product designed to provide natural-looking coverage for gray or uneven hair tones. It blends seamlessly with a smooth finish.

#SHI20-1
(BROWN)

#SHI20-2
(BLACK)

SP CONDITIONING CREAM

350ml



SP Conditioning Cream is a semi-permanent color cream that nourishes hair, boosts shine, reduces static and enhances color vibrancy while strengthening hair.

#SHI56 (DEEP BROWN)

SEMI-PERMANENT HAIR DYE

250ml

PPD
FREEPARABEN
FREEAMMONIA
FREESILICONE
FREE

The dye should be applied to shampooed, wet hair. Gloves must be worn to protect the skin from staining. After 15–30 minutes, depending on the desired intensity of color, rinse thoroughly with warm water without using conditioner immediately. For best results, it is recommended to avoid washing the hair for 24–48 hours and to use sulfate-free shampoos to maintain color vibrancy.

Suitable for hair extensions.



1
NAVY BLUE
FN310-1



2
SCARLET RED
FN310-2



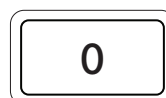
3
VIOLET PURPLE
FN310-3



4
PEACOCK GREEN
FN310-4



5
SATIN BLACK
FN310-5



0
FN310-0

MIX & MATCH



G1
GREY
FN310-G1



G2
IRON GREY
FN310-G2



G3
PURPLE RED GREY
FN310-G3



N1
NEON YELLOW
FN310-N1



N2
NEON GREEN
FN310-N2



N3
NEON PINK
FN310-N3



N4
NEON ORANGE
FN310-N4



N5
NEON BLUE
FN310-N5

SEMI-PERMANENT CONDITIONING COLOR CREAM

300ml

PPD
FREEAMMONIA
FREE

Semi-Permanent Conditioning Color Cream can be used for dyeing and conditioning. They penetrate the cuticle further to deposit color in the cortex, moreover there is no hydrogen peroxide required to develop the color.

DIRECTIONS:

The hair should be shampooed and towel-dried thoroughly. The cream is then applied evenly throughout the hair, ensuring all strands are fully coated. The hair is wrapped with a hot towel or steamed. The color cream is left on the hair for 30–40 minutes before rinsing until the water runs clear and clean.



MIX TONER

000

SH32-0



CARMINE

001

SH32-1



INDIGO

002

SH32-2



BANANA

003

SH32-3



CYCLAMEN

004

SH32-4



GRAPE

005

SH32-5



SH32-6

GREEN BROWN

006



SH32-7

MOCHA

007



SH32-8

DEEP BROWN

008



SH32-9

CHESTNUT

009



SH32-10

DEEP BROWN

010



SH32-11

ORANGE SUNSHINE

011



SH32-12

MAHOGAMY

012



SH32-13

PURPLE

013



SH32-14

SMOKY GREY

014



SH32-15

CHARCOAL GREY

015

for professional USE

These products are specially formulated for professional use. For optimal results and safety, we recommend they be applied by trained hair care professionals.

SALON SHAMPOO

3500ml



Professional shampoo for all hair types, particularly suitable for hair frequently undergoing chemical treatments. Adds volume and deeply cleanses.

#F100

SALON CONDITIONER

3500ml



Professional conditioner with a high concentration of hydrolyzed collagen, providing silky texture, elasticity and toning.

#F101



DAMAGE CURE

750ml + 7 x 10ml



Damage Cure is a hair treatment that repairs and strengthens damaged hair. Enriched with proteins, it improves elasticity and protects against breakage. Ideal for chemically treated or over-processed hair.

#SH84



SECRET GARDEN

750ml + 7 x 10ml



Secret Garden is rich in vitamins, wheat protein and essential oils, provides strength and manageability to the hair. The package contains three stimulating and four relaxing ampoules of essential oil.

#SH34-L



24H SURVIVAL KIT

6x 100ml



Three different aromatic essential oil hair masks, based on shea butter, macadamia and avocado oil. Formulated to penetrate deep into the hair cortex. The high concentration of keratin forms a protective film and leaves hair vital and voluminous.

#K12



CONDENSED HAIR TREATMENT

680ml



Condensed Hair Treatment contains amino acids similar to the composition of the hair. Used during chemical treatments for extra protection and nourishment or during styling for daily hair care routine.

#SH16-XL



RECONSTRUCTION TREATMENT

100ml



E911 can be used during chemical processes to replenish protein. It strengthens and protects hair instantly with proteins and amino acids, making it excellent for those undergoing frequent chemical or thermal styling. Can be used for daily hair care.

#F86



PROTEIN REPAIR HAIR SERUM

700ml



Chihtsai Protein Repair Hair Serum is rich in silk protein and jojoba oil that repairs, smooths and protects damaged hair. Use as leave-in therapy, deep mask treatment or during heat or chemical treatments.

#FNI40



SH MASSAGE CREAM

500ml



High quality cream for massage. Allows hands to glide without creating grease. Its ingredients help to relax muscles and blood circulation without causing irritation.

#SH43

AV IONIC HAIR STRAIGHTENER CREAM

500ml



Straightening cream that provides a natural, long-lasting result without damaging the hair structure.

#F83

CYS HAIR PERMANENT WAVE SYSTEM

500ml



Rich in L-Cystine, it nourishes and protects the hair while giving elastic, well-defined curls.

#FN304

BLEACHING POWDER

500ml



Shaan Honq's bleaching powder is a professional-grade hair lightener that offers strong lift and grey coverage while caring for hair health.

#N6 | #N6L

AV IONIC PRESERVATION

150ml



Keratin and nutrient-rich amino acid lotion for hair protection against chemical treatments and frequent blow-drying. Repairs, restructures, and renews hair, preventing split ends and dehydration.

#F83-2

COLOR DEVELOPER

1000ml



3%

6%

9%

12%

Shaan Honq ColorMate Developer is a professional, non-drip peroxide cream that activates dyes for vibrant, long-lasting color. Available in various volumes for grey coverage or lightening.

#SH4I

#SHAMPOO



#N2
PAGE 3



#FN003
PAGE 26



#SN26
PAGE 32



#SNI0
PAGE 32



#FN009
PAGE 9



#FN33-L
PAGE 27



#FN30-L
PAGE 28



#FN14
PAGE 13



#SN25
PAGE 31



#SN29
PAGE 32



#SD206
PAGE 20



#N5
PAGE 4



#SUI79
PAGE 21



#FE01
PAGE 30



#FE01-M
PAGE 30



#SD204
PAGE 20



#FN22
PAGE 13



#FN17
PAGE 14



#FN31-L
PAGE 28



#FN004
PAGE 26



#FN018
PAGE 27



#N4
PAGE 4



#FO01
PAGE 15



#FO20
PAGE 18



#FN005
PAGE 26



#FN26
PAGE 13



#FN29
PAGE 9



#SD205
PAGE 20



#FN011
PAGE 26



#FN006
PAGE 26



#FN36-L
PAGE 27



#F97
PAGE 9



#SD216
PAGE 21



#SD217
PAGE 21



Sulfate-free product

#SHAMPOO



#N1
PAGE 3



#FN110
PAGE 14



#N3
PAGE 3



#FN28-L
PAGE 27



#SD207
PAGE 20



#N6
PAGE 4



#FN032-M
PAGE 8



#FN021
PAGE 26

#CONDITIONER



#N7
PAGE 4



#FN142-M
PAGE 8



#FN127
PAGE 13



#FN122
PAGE 14



#SUI80
PAGE 22



#FN104
PAGE 28



#SD208
PAGE 22



#FN107
PAGE 28



#N8
PAGE 4



#FN119
PAGE 13



#FN134
PAGE 13



#FO19
PAGE 15



#SD209
PAGE 22



#FS2
PAGE 34



#SNI25
PAGE 31



#FN138
PAGE 9



Sulfate-free product

#HAIR TREATMENT



#FNI43
PAGE 28



#SUI86
PAGE 22



#FE03-L
PAGE 30



#N10
PAGE 6



#SHI08
PAGE 36



#FO02
PAGE 16



#FS4
PAGE 34



#SH82
PAGE 36



#FNI13-I
PAGE 5



#FNI14-I
PAGE 5



#N11
PAGE 6

*PROFESSIONAL USE



#N35
PAGE 6



#N36
PAGE 6



#SH34-L
PAGE 42



#KI2
PAGE 42



#SH84
PAGE 42



#SHI6-XL
PAGE 43



#FNI40
PAGE 43



#FNI47
PAGE 11



#SH37
PAGE 36



#FNI12
PAGE 28



#SH47
PAGE 36



#SHI33
PAGE 36



#FO09
PAGE 18

#SCALP THERAPY



#N20
PAGE 5



#FNI36
PAGE 27



#SD21I
PAGE 24



#FNI16
PAGE 12



#SUI82-C
PAGE 24



#FNI46
PAGE 8



#FO05
PAGE 16



#FNI05
PAGE 5



#SH36
PAGE 36



#SD21O
PAGE 24

*Suitable for home use. For best results and to ensure the right product for your hair type and condition, we recommend consulting a hair care specialist.

#LEAVE-IN TREATMENT



#N12
PAGE 5



#SUI29
PAGE 23



#SD212
PAGE 23



#FNI39
PAGE II



#FO04
PAGE 16



#FNI23-I
PAGE II



#SNI26-2
PAGE 32



#FNI01
PAGE 12



#FE02
PAGE 30



#FNI41
PAGE II



#N22
PAGE 5



#FNI20
PAGE 14



#FNI05
PAGE 12



#SUI81
PAGE 23



#F86
PAGE 43



#FO10
PAGE 16



#FO22
PAGE 44

#STYLING



#N13
PAGE 7



#FO08
PAGE 17



#F007
PAGE 17



#N24
PAGE 7



#SHI32
PAGE 35



#F99
PAGE 12



#FN204-M
PAGE 8



#FS3
PAGE 34



#FN202
PAGE 10



#FNI44
PAGE 10



#N14
PAGE 7



#FO23-N
PAGE 16



#FN252
PAGE 10



#N16
PAGE 7



#N25
PAGE 7



#SH31-N
PAGE 35



#FN253
PAGE 10



#FO21
PAGE 18



#FS5
PAGE 34



#DBM
PAGE 35



#FO12
PAGE 17



#FO06
PAGE 17



CYPRUS

- 📍 Griva Digeni Avenue 24
☎ 70003006 | 24668810
✉ europe@cytanet.com.cy
📷 chihtsai.cyprus

CRETE - HERAKLION

- 📍 Papandreou Avenue 178
☎ 0030 2810 210887
0030 6937 403341
✉ giannadagalaki@gmail.com

GREECE - THESSALONIKI

- 📍 Konstantinoupoleos 22
☎ 0030 - 69 860 39 69



Chih-tsai

SHAAN
HONQ

SH-RD
HAIR CARE

ENERGIZING

Volume Moisture
OLIVE

N.P.P.E.
HAIR CARE

Collagen
Amino
Acids

COLOR
FUN